

INSTRUCTION SHEET

E36



Unit 23 Red Lion
Business Park
KT6 7QD

Tel. 020 391 9001
Fax. 020 391 9002
E-mail. info@fusionled.co.uk

GENERAL INFORMATION

The E36 is a high powered linear line of LED light for use as a general light in corridors, offices, libraries and public spaces. This luminaire can pack a large punch of light (up to 2700lm/m) for its modest 35mm high x 35mm wide dimensions.

The E36 gives flexibility in allowing a designer to combine different colour temperatures or even RGB DECO-STRIP within a single luminaire.

PRODUCT SPECIFICATIONS



IMPORTANT INFORMATION

FUSION[®] recommends that installation should only be carried out by a qualified contractor ensuring the installation complies with current building regulations & local building control.

FITTING INSTRUCTIONS

Solid Surface

① Cut a 35mm wide (min) by 33.5mm deep (min) slot equal to the length of the profile

② Do not fit into new plaster or freshly painted area's until completely dry.

③ If being used fit end caps to profile
Note. Diffuser should not be fitted at the stage unless this is a bespoke pre-sealed unit

④ Fix profile into slot with appropriate glue/ mounting compound & leave to set

⑤ When glue/ mounting compound has set the LED strip may then be stuck to profile, avoid pressing on the surface of the LEDs as this could potentially damage them (press on the copper strip in between the LEDs)

⑥ If the profile is to be sealed (IP65) apply appropriate glue or sealer to edge of diffuser and press into place, starting from one end and working your way down

FITTING INSTRUCTIONS

Gypsum ceiling/ wall (Without fire restrictions)

① Cut a 38mm wide slot equal to the length of the profile, allowing for at least 40mm depth behind Gypsum board without infringing on joists, water pipes or cables.

② Do not fit into new plaster or freshly painted area's until completely dry

③ End caps should be fitted to profile when mounting in gypsum

④ Loosely fit the mounting brackets to the rear of the profile and slide into place in the ceiling

⑤ Tighten bracket screws until profile is secured in place (see Gypsum bracket image)

⑥ When fixed LED strip may then be stuck to profile, avoid pressing on the surface of the LEDs as this could potentially damage them (press on the copper strip in between the LEDs)

⑦ If the profile is to be sealed (IP65) apply appropriate glue or sealer to edge of diffuser and press into place, starting from one end and working your way down

GUARANTEE

The guarantee is invalid if the Profile is improperly used installed or tampered with. Installed in an improper working environment or does not comply with current building regulations.

FUSION[®] does not accept responsibility for any installation costs associated with the replacement of this profile.

FUSION[®] reserves the right to alter specifications without prior notice.

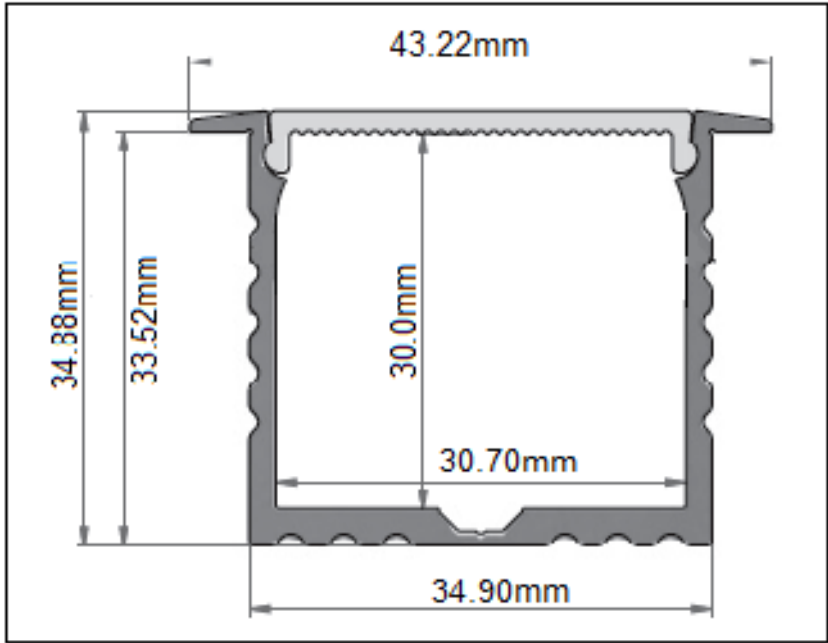
FUSION[®] does not accept any responsibility for claims arising from poor installation.

The FUSION[®] product warranty is available at the following web address:

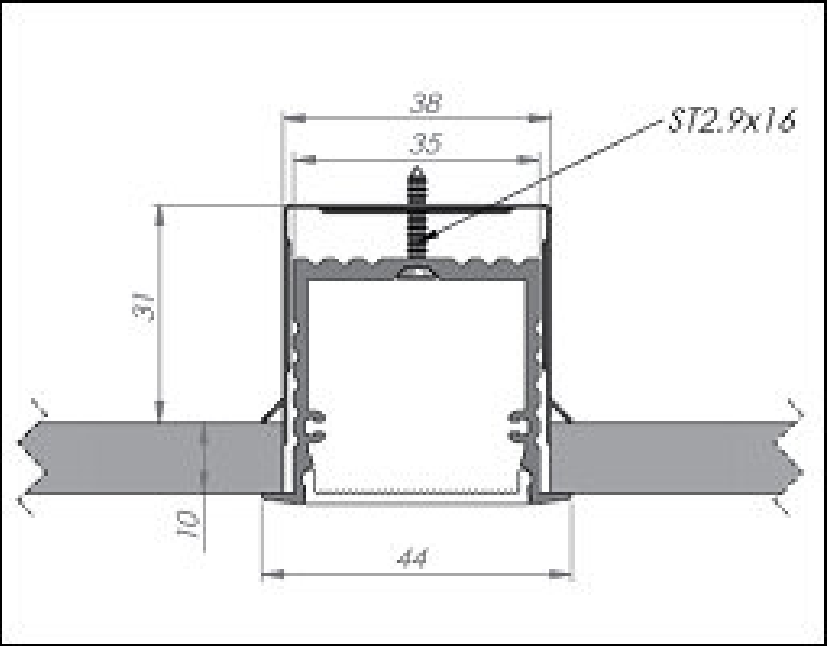
<http://www.fusionled.co.uk/terms-conditions/>

PRODUCT DIMENSIONS

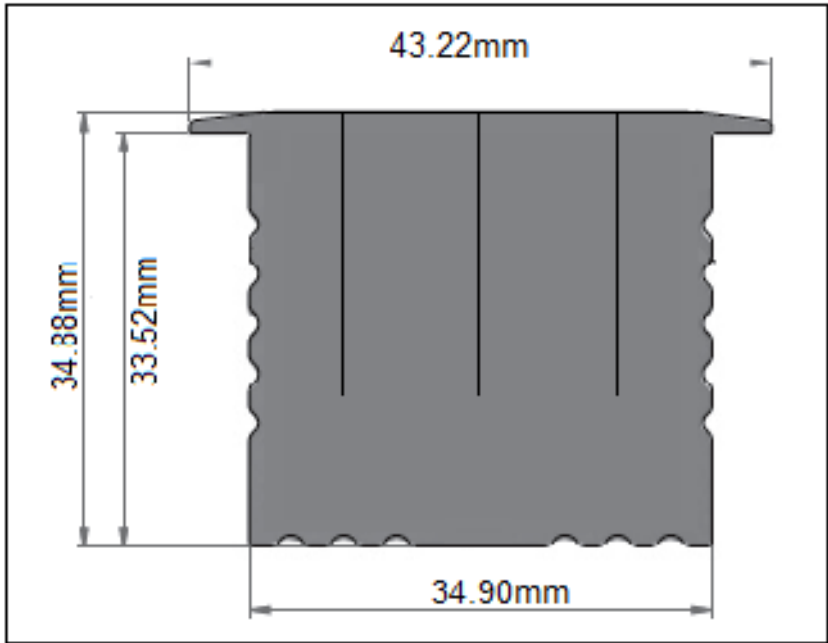
Profile



Gypsum bracket (without fire restrictions)



End cap



Gypsum (with fire restrictions)

